

Dec 23/Jan 24

# The Lychgate



The magazine for the people and  
community of Long Ditton

## REGULAR GROUPS AT ST MARY'S

### Friendship Lunch

Monday 4th Dec 12.30pm Christmas Buffet Lunch £12

Friday 5th January 1pm £8 per person

To book contact either Diana 020 8398 1184 or  
Florence 020 8398 3182

### Babes and Tots

Every Friday in term time. All carers and their little ones welcome for singing, outdoor play and crafting. 09.30 - 11.30.  
Coffee makers always welcome!

### Film Friday

Friday 15th December

**All of the above activities take place in St Mary's Community Hall**

## BOOK BOX

Wednesday 13th December at 8pm - Vesna Goldsworthy, celebrated Serbian author and poet, will talk about her new novel 'Iron Curtain', published by Chatto and Windus. The Guardian describes it as 'gloriously vivid'. It is dedicated to 'my friends who, like me, grew up east of that line from Stettin in the Baltic to Trieste in the Adriatic'.

Reserve your place through Eventbrite on the  
church website - tickets £9

Tea/coffee and homemade cake  
included in the ticket price

This event is held in St Mary's Community Hall

No January Book Box—see page 5 for our popular  
Burns' Night event on Sat 20th January

\*\* Front cover photograph was taken in the Woodland Garden, Bushy Park  
This robin perched on the bench just long enough to be photographed

As I write this at the end of October, tensions in the Holy Land are rising with the continued conflict in Gaza and Israel. I am reminded of my time there during a pilgrimage a few years ago. Close to the Church of the Nativity in Manger Square Bethlehem, the artist Banksy has stencilled a mural on a church door entitled 'Peace on Earth'. The text-based artwork is asterisked with the instruction 'Terms and conditions apply'.

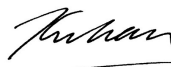
In Bethlehem, the very place where Christ was born into our world of suffering, Banksy's words are a poignant reminder of the political realities in the Middle East today. One cannot help being reminded that it is as a refugee, fleeing from violence, that our God chooses to incarnate into our world. Jesus our Saviour, born into social exclusion and with a death-threat hanging over him, comes to show us what God is really like, and to establish a kingdom not based on military might and violence, but one which associates with all who are exiled, cast out, crushed and occupied. Many of us will sing the carol O little town of Bethlehem at this time of year. It is all too easy for this to lead to idealised and saccharine images of Bethlehem in our imaginations that belie the political realities of 2000 years ago and now. The last verse of the carol is:

*O holy Child of Bethlehem, descend on us we pray;  
cast out our sin, and enter in; be born in us today.  
We hear the Christmas angels the great glad tidings tell;  
O come to us, abide with us, our Lord Emmanuel.*

The 'hopes and fears' that the hymn writer speak about are to be met in a Saviour who refuses to be born into wealth and entitlement, which would be normal of an earthly King. Instead, his coming into the world initiates God's subversive upsidedown kingdom, where 'power is made perfect through weakness'. The plea in the final verse, for our Saviour to 'come to us' and 'abide with us', echoes the cry down through the centuries of all of sighing humanity, who long for healing and hope, in a world where the weak are crushed by injustice.

The message of Christmas is that love has come into our world, and it keeps coming again and again. The love that came down at Christmas cannot coerce or change by force, but comes to each one of us, with the invitation to partake and share of that love. Our prayer, this year and over the years, is to see peace and justice return to the land where God took on human flesh.

Christmas blessings to you and  
all whom you love



## ST MARY'S 100 CLUB RESULTS

### WINNING NUMBERS

October

1st prize No.34

2nd prize No.58

3rd prize No.85

New 100 Club draw starts in January

\*\*\*\*\*

## What sort of Christmas card person are you?

The time to send and receive Christmas cards has come round again. Time for our annual gasp at the cost of cards and sheer disbelief at what the Post Office charges to send them.

It seems there are three kinds of people when it comes to Christmas cards: the total abstainers, the total givers, and the selective givers.

Abstainers write 'Happy Christmas everyone' on Facebook, and consider the job well done. Total givers spend a fortune on cards and stamps and send them to everyone they know. Selective givers try to cut corners, but then cannot remember who sent who what, and as the cards pour through their door, spend time worrying.

However you decide to do it, it is good to stay in yearly touch with your widest circle of friends and family. Proverbs points out that: 'Like cold water to a thirsty soul, so is good news from a far country.' Proverbs 25:25. They will enjoy hearing from you!





**BURNS' NIGHT SUPPER**  
**Saturday 20th January**  
**6.30pm - 9.30pm**  
**St Mary's Community Hall**  
**Tickets £25 per person**



Three course meal, vegetarian option available  
Bring your own drink, glasses provided  
There will be a piper and all the traditional speeches,  
ending with a poetry reading - your chance to read out a  
favourite poem (by any poet, not just Burns)

Book by speaking to Alison in church, Diana (8398 1194)  
Joanne (8398 5637) or through Eventbrite on the  
church website



**QUIZ NIGHT**



**SATURDAY 3rd FEBRUARY**  
**LONG DITTON VILLAGE HALL**

**6.30pm for 7.00pm start**

**BYO food, drinks and glasses**  
**plus money for the raffle**

**No more than eight to a team**

**Tickets £10 available from**  
**020 8398 5637/020 8398 1184**  
**Or book through Eventbrite on the**  
**Church website**



## The story behind 'The Night before Christmas'

It was 200 years ago this Christmas, on 23<sup>rd</sup> December 1823, that the famous poem '*The Night Before Christmas*' was first published (anonymously) in the Sentinel newspapers in Troy, New York.

It was light-hearted, full of fun and not at all what you might have expected from its author, Clement Clarke Moore. For Moore had been born in 1779 into a prominent New York family. His father, Benjamin Moore, the Episcopal bishop of New York, had even taken part in the inauguration of George Washington as the nation's first president. As for Clement Moore, he was a scholar of Hebrew and a professor of Oriental and Greek literature at the General Theological Seminary in Manhattan.

On 24<sup>th</sup> December 1822, the night that Moore composed the poem, he was travelling home from Greenwich Village. He had gone there to buy a turkey, in order to fill the last of a number of baskets that his family donated to the poor during the Christmas season. Perhaps Moore was inspired by the plump, bearded Dutchman who took him by 'taxi' sleigh on his mercy errand through the snow-covered streets of New York City that night. Whatever it was, Moore scribbled down 'A Visit from St. Nicholas' for the amusement of his own six children, to whom he read the poem when he got home that evening. His description of St Nicholas drew upon the Dutch-American and Norwegian traditions of a magical, gift-giving figure who appears at Christmas time.

The following year, Christmas 1823, without his permission, the poem was made public, Moore was said to have been at first embarrassed to be named as the author of such a light-hearted verse, and then astonished by its quick rise to popularity. He finally published it under his own name in 1844.

*...But I heard him exclaim, ere he  
drove out of sight, "Merry Christmas to  
all, and to all a good night."*

There is more on this story at the  
Library of Congress website



## Little Donkey, Little Donkey

You are bound to sing about donkeys this Christmas, especially the little one that carried Mary to Bethlehem but how much do you know about donkeys? They are really rather special. Here are some fun facts:

- 1) There are more than 44 million donkeys in the world, of all shapes and sizes.
- 2) There are more than 186 breeds of donkey.
- 3) Donkeys have good memories. They can remember places and other donkeys even 25 years after they last saw them.
- 4) Donkeys are not stubborn, they are cautious. If they are fearful about something, they will do their best to avoid it.
- 5) Donkeys are naturally clean. Given the chance, they are always grooming themselves and each other.
- 6) Donkeys like to be warm and dry. They come from deserts and savannahs.
- 7) Donkeys are social. They make deep bonds with their family and herd and get very upset if someone they love is taken from them.
- 8) Donkeys have big ears for a good reason – it means they can hear each other at a great distance. They communicate by braying, grunting, whiffling, squealing and snorting.
- 9) Donkeys help the ecology of their desert homes by digging into the ground to access water. This provides little creatures such as birds and chipmunks with life-saving water.
- 10) Donkeys need your help. Millions round the world are being mistreated, and you can take action to help them.



***World Donkey Day: 10 Delightful Donkey Facts***

## How do you write for children?

BookBox is our St Mary's monthly event relating to some aspect of books and culture. Every month we invite a speaker to the community hall – and always end the evening with home-made refreshments. It's a lovely way to invite in our wider local community and we have enjoyed some excellent talks.

We are always pleased to receive suggestions and we had several requests for information for those wanting to write for children. My thinking was that someone who had done just that, would be a great choice of speaker – and so Cath Howe proved to be.

By background an English and Drama teacher, Cath's first publication was a collection of scripts written for junior school children (*Let's Perform!* published by Bloomsbury). Later, advised by her agent, she was encouraged to write about issues that 'sat on her heart', which were published as fiction for 8-12 year-olds. The publisher of these titles, Nosy Crow, is a multi-award winning and independent publishing house and was a really good fit for the kind of books Cath wanted to write. The title read by the BookBox members, in preparation for our event, was 'Ella on the outside'. I won't tell you what it's about, for fear of ruining the story, but it's profoundly affecting, whatever age the reader.

Cath was remarkably generous. Writers often are reluctant to talk about their practice, for fear of jinxing it, or perhaps offering up information they have gained the hard way. Not this author. Among the gems were:

- If you are writing contemporary stories, your publishers will expect you to be completely up-to-date, because children will notice! So be sure that how you describe phones and other devices and the routines of their daily lives, feel real to young people.
- Be clear about the age group you are writing for, because publishers are very specific about how they categorise books. You can read to children from birth onwards and this is a great developmental activity. There are picture books (e.g. by the Alhbergs) for children up to the age of 4 or 5; early reader titles in chapters generally go up to about the age of 8 or 9 (e.g. *Worst*



*Witch*), longer fiction for children aged 8-12 (e.g. Michael Morpurgo) and 'young adult' are for teenagers (e.g. J.K. Rowling). However, what unites all these different groups is that a story must have a heart and be meaningful and that is as true for picture books as much longer titles. To prove this, try reading *Owl Babies* to someone you love!

- Publishers want authors to be collaborators. So, if you are planning to write for children, you will be encouraged to give talks in schools, take part in festivals, read aloud and write for the media – for advice on how this is done see Cath's website [www.cathhowe.com](http://www.cathhowe.com)

If you would like to sample Cath's books, do call into The Regency Bookshop in Surbiton, which stocks the titles we recommend for our BookBox events. A full list of future events can be found on our church website [www.stmaryslongditton.org.uk](http://www.stmaryslongditton.org.uk)

**Rev'd Alison Baverstock**



**Cath Howe**

## Why King Charles never throws things away



King Charles is on a mission to tackle food poverty and rising food waste. It is said that he and the late Queen ate daily slices from the same cake until it was finished, as part of a drive to curb their personal food waste.

As for the nation, the king has been increasingly concerned that in the UK, 12 million tons of food is thrown away each year – even though, according to experts, almost three quarters of it could still be eaten. In contrast, an estimated 4.7million people are living in food poverty. To combat this problem, King Charles has launched The Coronation Food Project, to coincide with this, his 75<sup>th</sup> year.

Up to eight new food hubs around the country will store food, prepare and package it, before redistributing it to organisations like food banks and community kitchens. The long-term goal is to circulate 200 million meals a year. In the meantime, King Charles is careful not to throw his cake away Is there one simple thing you could do in your own kitchen this Christmas, to curb your personal food waste?

\*\*\*\*\*

## No more ‘postcode lottery’ recycling

Life is going to become simpler when it comes to recycling. From 2026, the national recycling laws are to be standardised, with Councils across the UK all having to collect the same glass, metal, plastic, paper and card, food waste and garden waste. It is expected that the plans will lead to packaging that is clearly labelled ‘recyclable’ or not, without the need for households to check local provisions.



“Simpler recycling will help us all recycle more easily, doing our bit to help save the planet and make the best use of precious resources that we use every day,” said Therese Coffey, then Environment Secretary. “Alongside weekly food waste collections, we are ending the postcode lottery of what you can put in your bin, so that wherever you live in the country, you will be able to recycle the same products with confidence.”

# Big Ben

Do you stay up until midnight on New Year's Eve? If so, this year will be special – it is 100 years ago, on 31<sup>st</sup> December 1923, that the BBC first broadcast the chimes of Big Ben to welcome in the New Year. For it was not until then that the chimes of Big Ben were ever heard outside of Parliament and Westminster. Then the BBC got permission to broadcast them to the nation, and history was made.



That first year, the BBC engineers were not allowed into Parliament and so had to access Big Ben from the roof of the Palace of Westminster. This meant that their microphone picked up not just the chimes, but a lot of traffic noise as well. However, a tradition had started, and by 1924 the Big Ben bongs were being broadcast every day. By then the BBC had installed low sensitivity microphones very close to the bells, so that they missed the sound of the clock mechanism.

The nation quickly came to love the sound of Big Ben and during the Second World War the chimes were broadcast across occupied Europe – encouraging millions in their struggle against the Nazis. The Big Ben daily time signal on the BBC is still cherished today, and Big Ben rings live for important events such as Remembrance Day and New Year, when the BBC sends the sound right around the world.

\*\*\*\*\*

## Stop mist on your windscreen

If you will be out in your car a lot this Christmas, here's an easy way to stop your windscreen from misting up: Simply clean it with shaving foam. It provides a protective barrier which stops mist forming. Ice hockey players use it to stop their face masks from steaming up while they're on the ice.

It's easy to do. Put a good dollop of shaving foam onto a clean towel and then wipe it all over the windscreen. Then take a second clean towel, and gently wipe off the shaving foam. This leaves a protective barrier, but it will need to be regularly reapplied, to continue to work.

This tip can be found on the RAC website: [www.rac.co.uk](http://www.rac.co.uk)

## ROYAL BRITISH LEGION

THE DITTONS & HINCHLEY WOOD  
BETTS WAY LONG DITTON

**ALL NEW MEMBERS WELCOME**  
(no need to be ex-service)

**HALL FOR HIRE**  
for special occasions including  
Birthdays & Weddings

LARGE GRASS GROUNDS

LINE DANCING - FRIDAY EVENINGS  
DISCOS:  
SNOOKER: DARTS  
OUTINGS: BANDS

**Contact: Niki Thomas**  
**020 8398 6263**

## CROSSY'S HOME & GARDEN

**ALL AROUND THE HOME**

HARDWARE



KEY  
CUTTING



TOOL  
SHARPENING



GARDEN  
SUPPLIES



PET SUPPLIES



FAX SERVICE

HOUSEWARES

26-28 MANOR ROAD NORTH  
HINCHLEY WOOD KT10 0SH  
TEL: 020 8398 2828 FAX: 020 8398 0433

## THORKHILL PHARMACY

Mr D Patel MRPHARMS

Prescription collection service  
Computerised Patient Medication Record  
Advice and Help on Minor Ailments  
Prescription Delivery Service for  
the Housebound  
Homeopathic Medicines · Vitamins

**EVERYTHING YOU WOULD  
EXPECT FROM YOUR LOCAL  
FRIENDLY CHEMIST**  
Established 50 years

Open Mon to Fri 9am - 6pm  
*Closed for lunch 1pm - 2pm*

Sat 9am - 1pm

**EASY PARKING**

**94 Thorkhill Road, Thames Ditton,  
Surrey, KT7 0UQ  
Tel: (020) 8398 3008**

**If you would like to  
advertise in or contribute  
an article to this magazine,  
please contact**

**Janet Burton**

**07810 810822**

**email: [janetpb15@gmail.com](mailto:janetpb15@gmail.com)**



## Budget-friendly cleaning and gardening services

Save time from household tasks!

- ✓ Convenient regular cleaning
- ✓ Affordable specialised cleaning
- ✓ Easy-to-book gardening

FantasticServices.com

📞 015 4460 0020



# FREDERICK W PAINE

## FUNERAL DIRECTORS & MEMORIAL CONSULTANTS



- Help with all aspects of arranging the funeral
- Modern fleet of Mercedes hearses and limousines
- Our friendly, knowledgeable staff are available 24 hours every day
- Assistance with arranging memorials
- Contact us to discuss 'Dignity' pre-arranged funeral plans



265 Ewell Road,  
SURBITON, Surrey

Tel: **020 8399 2060**



Part of Dignity Funerals Ltd.  
A British company.  
[www.dignityfunerals.co.uk](http://www.dignityfunerals.co.uk)

CARING FUNERAL SERVICES

### A TRADITION OF TRUST AT YOUR TIME OF NEED

Please mention this magazine if you use any of the adverts posted here

page 13

## The Village Hall

2 Ewell Road  
Long Ditton



Welcomes  
sports clubs, workshops,  
meetings, societies, lectures,  
demonstrations, classes,  
children's parties.

Occasional and  
long-term hire

**07804 057589**

The Village Hall Trust  
is sometimes able to make  
donations for charitable  
purposes to benefit the  
residents of Long Ditton.  
Enquiries to 020 8398 3643



## Long Ditton Residents' Association (LDRA)

[www.longditton.org](http://www.longditton.org)

Contact: Mark Herbert Tel: 020 8398 6037

We aim to:

- Preserve Long Ditton from over development
- Maintain the character of the district
- Improve the amenities and defend our Green Belt
- Keep in close contact with our councillors

*If you share these aims please help us -  
The subscription is a modest £2 a year per adult.  
The Association is non-political and non-sectarian*

*Committee meetings are held at 8pm on the first  
Wednesday of the month at St Mary's Community  
Hall, behind the church*

*All residents are welcome!*

# CHIROPODIST

**Jonathan Miller** M.Inst Ch.P.

Member of the Institute  
of Chiropractors and  
Podiatrists



HOME VISITING SERVICE  
IN YOUR AREA

7 Fleece Road, Long Ditton,  
Surrey, KT6 5JP

Telephone & Fax (020) 8873 7189

## LASTING POWER OF ATTORNEY AND WILLS

£250\* per LPA  
(property or finance)

\*Price excludes  
Office of Public Guardian fee

Standard Mirror Wills £445 plus VAT  
Standard Single Wills £295 plus VAT

**Tim Wilde—Solicitor**  
Based in Long Ditton

Telephone **020 3720 2250** day  
**07810 480 180** anytime  
[tim@wildelaw.com](mailto:tim@wildelaw.com)

## ST MARY'S COMMUNITY HALL

Now available for booking  
meetings, parties and  
long-term hire

For further information  
ring - 020 8339 0008



**LONG DITTON**  
INFANT AND NURSERY SCHOOL  
THE HEART OF LONG DITTON SINCE 1911

## **'BE THE BEST YOU CAN BE'**

Long Ditton Infant and Nursery School is a happy, friendly school at the heart of the local community. It's our mission to develop confidence, resilience, creativity and a life long love of learning in all of our children.

For more information and details of open days please contact us on 0208 3984398, or email [info@longditton.surrey.sch.uk](mailto:info@longditton.surrey.sch.uk). Or visit our web site at [www.longditton.surrey.sch.uk](http://www.longditton.surrey.sch.uk)



## OFFICE SKILLS TUTOR

- **Staff training**
- **One-to-One tutoring**
- **Small groups/classes**
- **All levels from beginner**
- **Nervous students welcome**
- **Experienced, patient tutor**

- Word
- Excel
- PowerPoint
- Publisher
- Access
- Outlook
- Office skills
- CV writing

Phone: 020 8398 2101  
Mobile: 07949 069398  
E-mail: [pedder@rocketmail.com](mailto:pedder@rocketmail.com)

28 St Mary's Road  
Long Ditton  
Surrey KT6 5EY

# The Plough & Harrow

The Plough & Harrow has undergone an extensive, sympathetic and sensitive refurbishment and will be welcoming guests through its doors from Tuesday 5th December.

The pub is the latest addition to the Heartwood Inns family. The original name has been reinstated to bring this characteristic pub back to its rightful place at the heart of the local community of Long Ditton.



The refurbishment of the pub has been extensive whilst remaining true to the original design, including its distinct facade with the original badge from the original local brewery, Hodgsons, who built the pub. To the front there is a spacious airy bar where perfectly poured pints will be served, expertly mixed cocktails and a carefully curated wine list. The bar will also feature an impressive double sided fireplace with

wood burner, perfect for a cosy catch up over a drink or two on a chilly day.

To the rear of the pub more work has been undertaken to create a warm and hospitable dining space that will be decorated in Heartwood's signature, welcoming and quirky style. An impressive roof light floods the dining room with natural light and the doors look out to the rear garden. In summer the doors can be thrown open to the garden to let in the warm air. A mix of cosy banquette seating, snugs and eclectic furniture will create a space that can host guests from a family Sunday lunch to a special celebration.

The expansive garden has also undergone a significant makeover which will truly come into its own come spring. The patio leads to a garden room with a retractable roof so guests will be able to dine al fresco whatever the weather. Through the garden there will be picnic benches for outside dining and drinking, whilst raised flower





beds alongside seasonal herbs will provide a haven for bees and butterflies.

The pub will be serving a seasonal home-cooked menu, full of favourites that will tempt even the most discerning of guests. Choose from classics such as a twice-baked cheese soufflé with a rich Coastal Cheddar sauce or herb-crusted lamb roulade with confit onion and herb stuffing. You'll want to save room for much loved desserts, such as sticky toffee pudding or Madagascan vanilla crème brûlée. On Sundays, guests can enjoy a classic Sunday roast with bottomless trimmings including perfectly crunchy roasties, light as air Yorkshires and lashings of gravy. Little ones are catered for with their own menu full of treats for tiny taste buds.



Lukas will be the General Manager and he has been with Heartwood Inns for several years and is moving from sister pub, The Cricketers in Cobham. Lukas and his team are looking forward to getting to know the Long Ditton locals, supporting local activity and for the pub to become a hub of the local community.

The Plough & Harrow is truly a place for anyone and for any occasion. Whether you are popping in for a pint with your canine chum (dogs are welcome in the bar and the garden), dropping in for a leisurely lunch or all out for a special occasion, there is something for everyone.





At LRH-Homes we strive to provide the highest standards of care with a friendly manner in a homely environment. We cater for respite or permanent stays for residents who may require residential or nursing care. Please contact the homes directly for further information.



**Bourne House Nursing Home**  
45 Langley Avenue, Surbiton, KT8 6QR  
Tel: 020 8399 6022  
Email: [bourne@lrh-homes.com](mailto:bourne@lrh-homes.com)



**Brook House Nursing Home**  
8A Nelson Road, New Malden, KT3 5EA  
Tel: 020 8942 9360  
Email: [brook@lrh-homes.com](mailto:brook@lrh-homes.com)



**Hamilton Nursing Home**  
24 Langley Avenue, Surbiton, KT8 6QW  
Tel: 020 8399 9666  
Email: [Hamilton@lrh-homes.com](mailto:Hamilton@lrh-homes.com)



**Southborough Nursing Home**  
12-14 Langley Avenue, Surbiton, KT8 6QL  
Tel: 020 8390 3366  
Email: [southborough@lrh-homes.com](mailto:southborough@lrh-homes.com)

### Job Opportunities

We Currently have job opportunities for both full and part time Nurses and Healthcare Assistants. For more information please email your CV to [recruitment@lrh-homes.com](mailto:recruitment@lrh-homes.com) quoting reference: CC/JOB/JULY18 or call our head office on 020 8390 3366 and ask for recruitment.

[www.lrh-homes.com](http://www.lrh-homes.com)

# OUR FAMILY HELPING YOUR FAMILY

For over 240 years, eight generations of the Lodge Family have been privileged to help local families in their time of need. We provide all funerals, whether modern, traditional, green or alternative, with care and compassion.

### SURBITON:

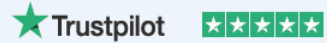
50-52 Brighton Road 020 8546 3504

### THAMES DITTON:

37 High Street 020 8398 4586



Robert, Chris, Andrew & Michael Lodge



*"An excellent service providing a compassionate funeral for our father. Lodge Brothers exceeded our expectations and demonstrated a depth of care that one would show to their own family."*

- J.Luxton



ASK ABOUT OUR  
PRE-PAYMENT  
FUNERAL PLANS

**Lodge**  
BROTHERS 1780

*the family you can turn to*

[www.lodgebrothers.co.uk](http://www.lodgebrothers.co.uk)

FLORAL TRIBUTES • FUNERAL PLANS • WILLS & PROBATE

## TOTAL PLUMBING(SURREY)

General plumbing services  
Central Heating installation

Boiler installation

Competitive rates No VAT

Check a Trade and Gas Safe registered

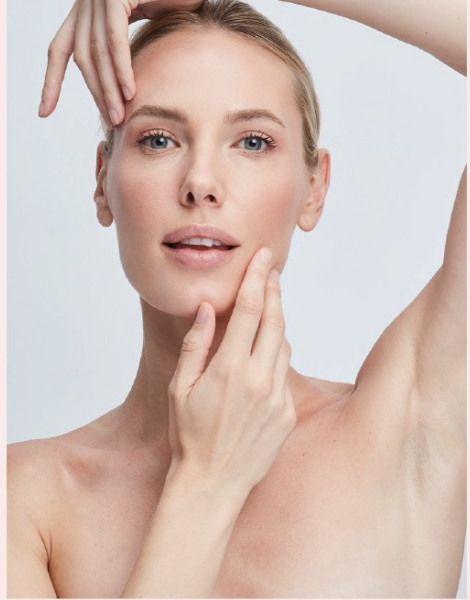
Testimonials available



Contact Darius on  
07957 799 821  
[totalplumbingse@yahoo.com](mailto:totalplumbingse@yahoo.com)

To discuss your  
requirements  
Free quotes & friendly  
advice





## How to Invest in the Future of Your Skin

We all want to look and feel our best. As the body's largest organ, our skin mirrors our well-being.

With our newly expanded Treatment Enhancement range of products, we can recommend clinically proven plans to help you get the most from your treatments and leave you looking your best. The use of our advanced dermo-cosmetic skincare alongside in clinic treatments will improve procedure outcomes. We offer you a complete professional service and we build trust and loyalty. Our treatment enhancement programmes are designed to even skin tone and smooth texture. Your complexion will awaken and your skin will

brighten within as little as 15 days.

Our skincare plans are for those with dull skin lacking in radiance, those with uneven skin tone and discolorations, textural issues with visible lines and wrinkles. Our plans complement our treatments such as skin peels, profound high intensity ultrasound and micro needling with radiofrequency, Profhilo and a great range of skin boosters, dermal fillers, regenerating treatments, thread lift and much more.

**Prepare Renew Hydrate Protect**

**Get in Touch for a bespoke consultation and plan.**



*Dr. Bravis*

[www.thamesdentalcare.com](http://www.thamesdentalcare.com)

[info@thamesdentalcare.com](mailto:info@thamesdentalcare.com)

02083989466

[@drtheodorabravis](https://www.instagram.com/drtheodorabravis)

[thamesdent](https://www.facebook.com/thamesdent)

6 Cholmley Terrace, Portsmouth Road, KT7 0XX

# Owen White & Catlin LLP

S O L I C I T O R S

PRIVATE CLIENT	FAMILY LAW	RESIDENTIAL CONVEYANCING	CIVIL LITIGATION
MEDIATION	COMMERCIAL CONVEYANCING	COMPANY AND COMMERCIAL LAW	COMMERCIAL LITIGATION

*Always there when you need us*

**North Lodge, Esher Park Avenue**

**Esher, Surrey, KT10 9NP**

**01372 469 100**

**esher@owc.co.uk**

## **Our other offices**

Addlestone    Ashford (Middx)

Chiswick    Feltham

Hammersmith (incorp. Watson Marshal)

Shepperton

**[www.owenwhitecatlin.co.uk](http://www.owenwhitecatlin.co.uk)**



# Telson Roofwise Limited



104 Leatherhead Road, Chessington, Surrey KT9 2HY

Reg No. 1293

**Building and roofing contractors. Specialists in listed building work**

## ROOFING

- Slating and tiling
- Flat Roofing (felt/asphalt/leadwork)
- All types of roofing repairs – guttering and fascias

## BUILDING

- Extensions
- Loft Conversions
- Refurbishment/Decorations
- Kitchens and bathrooms

Fully Insured

Guarantees available for new roofs

Tel: **020 8391 9112** Email: **info@telsonroofwise.co.uk**  
**www.telsonroofwise.co.uk**

\*\*\*\*\*

## Hunger in Zimbabwe – the hidden killer

The World Food Programme is warning that in Zimbabwe, about 24% of the children aged five years old and under are chronically malnourished. This leaves them weak, often diseased, low on energy and concentration and, therefore, unable to do their best in school.



Barnabas Fund continues to appeal for help in delivering ePap to such children. It is a simple porridge fortified with vitamins, minerals and protein, which provide a nutrient rich diet. The Fund has already provided young children with more than a million servings of ePap this year, with great success.

If you want to help feed a child in Zimbabwe, please go to:  
<https://www.barnabasaid.org>

## Christians in India face rising violence

Attacks against Christians in India have been rising, fuelled by right-wing nationalism, while growing numbers of Christians are being arrested under anti-conversion laws.

India's most populous state, Uttar Pradesh, heads the list of states most hostile towards Christians. Others include Chhattisgarh and Jharkhand. In Manipur, the *Telegraph India* reported 254 churches were damaged in recent tribal clashes. All these incidents are mob violence led by vigilante groups.

Human Rights Watch also flag up the growing attacks. They state: "Over the last decade there has been an undeniable increase in the number and frequency of attacks against religious minorities in India, especially Muslims and Christians."

The UN Special Rapporteur on Minority Issues Fernand de Varennes, warns: "India risks becoming one of the world's main generators of instability, atrocities and violence, because of the massive scale and gravity of the violations and abuses targeting mainly religious and other minorities such as Muslims, Christians, Sikhs... It is systematic and a reflection of religious nationalism."

India is the world's largest democracy. Hindus make up around 75 per cent of the population, Muslims some 14 per cent, and Christians around 5 per cent. The country's constitution guarantees full religious freedom of worship and witness. If you want to support the Christian community in India, visit Release International at:

<https://releaseinternational.org>



Tribal Christians from three villages shelter in the Chhattisgarh town of Kondagaon after they were forced to leave their villages



### **Elmbridge Borough Council – New Local Plan**

The Secretary of State for Levelling Up, Housing and Communities has appointed Christa Masters MA (Hons) FRTPI, to hold an independent examination of Elmbridge's submission Local Plan. No dates have been announced at time of writing.

### **Village Green Application – One Tree Hill and Stokes Field Nature Reserve**

The Village Green (VG) application was heard at a Public Inquiry (24<sup>th</sup> – 28<sup>th</sup> April & 21<sup>st</sup> July) and we continue to wait for the Inspector's report to be published. The report will go to Surrey County Council committee for a decision on how and where VG designation will be granted.

### **2023 LDRA Annual Subscriptions**

2023 annual subs are due and will follow the same approach as previous years, i.e., online payments (and cheques for those who do not use online banking – to be sent to the Treasurer, 7 Chalcott Gardens, KT6 5HJ). We suggest £3.00 or more per household. Bank details remain the same:

Sort Code: 20 – 46 – 73      Account No.: 3350 6282      Payment  
Reference: <<*Your road name*>>

### **George Evelyn Pub**

The George Evelyn Pub has been taken over by the Heartwood Inns Group, and they will revert to the pub's original name - *The Plough & Harrow*. The pub will re-open on Tuesday 5<sup>th</sup> December, after major renovations, with the investment seen as a great boost for Long Ditton.

<https://ploughandharrowlongditton.com/>

### **Autumn Public Meeting**

The LDRA Autumn Public Meeting was held at the Long Ditton Village Hall on 29<sup>th</sup> November, where all residents were invited. Everyone had the chance to meet our EBC & SCC councillors and discuss local issues.



## **Christmas 'Long Ditton Lights Up' Event**

The popular 'Long Ditton Lights Up' event was held on Sunday 26<sup>th</sup> November. All residents were welcome to attend. The LDRA would like to thank SCC Councillor Nick Darby for arranging the usual donation, from his member's allowance, towards the cost of the Christmas trees above the Fleece Road shops.

## **LDRA Committee**

If you are interested in a position on the LDRA committee, please contact Mark Herbert or Paul Bartlett.

## **LDRA on Facebook**

The LDRA Facebook page continues to grow in popularity and has over 2,300 members. It is a great source of local information. You can join by searching FB for 'Long Ditton Residents Association' and requesting membership. Please read and agree to the FB page rules to be accepted.

## **Monthly LDRA Committee Meetings – Community Hall**

The LDRA continues to hold monthly committee meetings in the Long Ditton Community Hall, behind St. Mary's Church. All residents are welcome to attend, especially if they have an issue to raise. The meetings start at 8.00pm, on the first Wednesday in the month, except May, August and November.

## **Local Police**

All incidents of anti-social behaviour should be reported to Surrey Police (ring 101 or online <https://www.surrey.police.uk/>). The LDRA is working with the local police team, so please feel free to keep us informed too. Information on police matters can be viewed on <https://www.police.uk/pu/your-area/surrey-police/the-dittons-and-hinchley-wood/>

## **Help us to help you!**

In addition to Facebook and our website, we would like to use e-mail to keep you informed. If you would like to be on our e-mailing list please send your full name, your road and e-mail address to: [mark.herbert@longditton.org](mailto:mark.herbert@longditton.org). All information supplied will be used in accordance with GDPR, strictly by the LDRA Officers only, and not made public. All recipients are e-mailed using *Blind carbon copy* (Bcc).

# St James the Least of All

## On how to make the most of carol singing

The Rectory  
St James the Least

My Dear Nephew Darren

Carol singing is not what it used to be. My fond memories of a group of choristers, muffled in scarves and overcoats, carrying lanterns, and walking from door to door in the snow, as they sang 'While shepherds watched ...' had to be suddenly revised when I saw your own music group, in T-shirts inscribed with 'Jesus loves You', singing 'Little donkey', in your shopping centre. I suspect any money you raised would just about have paid for the electricity used to power your banks of electronic equipment. Singing in the main square of the Centre next to the fountain may have looked good, but it seemed to mean that the choir members were obliged to make constant trips to the lavatory.

Here at St James the Least of All, carol singing is regarded as a staff perk for the choir; the year when the Boys' Brigade tried to break their monopoly was suppressed with a ruthlessness that would have impressed Genghis Kahn.

Our annual carol-singing route involves months of meticulous planning. We find that a transparent collection box is vital, so that donors can see what earlier patrons have given. This means that those who are bound to put in notes must be visited first – *'pour encourager les autres'*. It also needs a detachable base, so that if coppers are given, they can be removed from sight before the next call.

Those homes that contain several children are visited just after bedtime, so that parents will give generously simply to get the choir to go somewhere else. Veiled threats to stay and sing more carols (unless they give generously) are usually very effective. Getting whoever looks the most innocent and photogenic to ring the bell and ask for money is a far more subtle way of ensuring a donation than planting any number of mafia lookalikes (such as our church treasurer) on the doorstep.

The choir always finishes its evening at the local pub – but again, the timing must be carefully managed. Too early and there will only be the landlord, his wife, and their Labrador to listen; too late and people will be so full of Christmas cheer that any carols will be hi-jacked and become the equivalent of back-of-the bus rugby songs.

Your loving uncle,

Eustace

\*\*\*\*\*

## Smile Lines

### Mother in a storm

One cold winter night, during a violent storm, a mother was tucking her small, frightened little boy into bed.. She was about to turn off the light when he said with a tremor in his voice: “Mummy, will you stay with me tonight?”

Mummy smiled and gave him a reassuring hug. “I can’t, dear,” she said, “I have to sleep with Daddy .” A long silence – and then came his shaky reply: “The big coward!”

### Father Christmas

Of course, I had expected that by the age of seven it was inevitable that my son would begin to have serious thoughts about Father Christmas. Sure enough, one day near Christmas he suddenly said: “Mum, I know something about Father Christmas, the Easter Bunny and the Tooth Fairy.” Taking a deep breath, I asked him what that might be . “Easy,” he said, “They are all nocturnal.”

### Children’s version of the Christmas story

When the three wise guys from the east side arrived, they found Jesus in the manger.

When Mary heard that she was the mother of Jesus, she sang the Magna Carta

Jesus was born because Mary had an immaculate contraption.

**LONG DITTON**  
**GENERAL CONTACTS**

<b>Group</b>	<b>Contact</b>	<b>Tele Number</b>
Babes 'n' Tots	Cathy Doyle	020 8398 0715
LD Residents' Assn	Mark Herbert	020 8398 6037
LD Garden Club	Liz Martin	020 8244 3147
Village Hall	Michelle Aveson	07804 057589
Rainbows	Lesley Sullivan	020 8398 0150
Brownies (Wednesday)	Lesley Sullivan	020 8398 0150
Brownies (Thursday)	Hannah Siebert	020 8398 0576
Guides	Fay Tiplady	07486 696167
Rangers	Cat Smith	07738 599318
Dittons Scouts contact	Stuart Jack	07971 479740
LDSM Junior School Sugden Road, KT7 0AD	Sarah Martin (Head)	020 8398 1070
LD Infant School Ditton Hill Road, KT6 5JB	Sarah Martin (Head)	020 8398 4398
Long Ditton Youth Club	Glenn Sampson	07588 825917
Ditton Bridge Club	Redvers Cunningham	020 8398 4338
Sugden Road Allotments	David Wiltshire	07718 054345
Long Ditton Cricket Club	Tom Bennett	07876 171899
Surbiton Bowls Club	Keith Stedman	07543 095070
Editor of Lychgate	Janet Burton	07810 810822
Citizens Advice Bureau Esher	01372 464770	
Elmbridge Borough Council	01372 474474	
Elmbridge Dial-A-Ride	01372 474944	
Thames Water Emergency Line	0800 980 8800	
Samaritans Kingston	Freephone: 116123	
Dittons & Weston Green Neighbourhood Care	020 8398 8600	

## ST MARY'S CHURCH CONTACTS

Ministry Team	The Rev'd Dr. Kuhan Satkunanayagam	020 8398 1583 (Day off -Tuesday)
Asst. Curate (part time)	The Rev'd Prof Alison Baverstock	020 8546 9267
Churchwardens	Bob Hancock Sue Rider	020 8398 0519 07512 999372
Pastoral Team	<i>Call us if you need someone to listen or talk with you</i>	
Pastoral Assistants	Cathy Doyle Joanne Hall Diana Jemmett Kenneth Mould Judith Topp	020 8398 0715 020 8398 5637 020 8398 1184 020 8339 0933 020 8399 1004
Sunday Club		<a href="mailto:children@stmaryslongditton.org.uk">children@stmaryslongditton.org.uk</a>
Churches Together	Cathy Doyle	020 8398 0715
Director of Music	Julia Bowyer	<a href="mailto:music@stmaryslongditton.org.uk">music@stmaryslongditton.org.uk</a>
Church Electoral Roll	Janet Critchley	07748 070243
Flowers	Tessa Vallings	020 8398 4807
Sacristan	Val Tanner	020 8974 2713
Stewardship Hon Treasurer	Sarah Carvalho	<a href="mailto:treasurer@stmaryslongditton.org.uk">treasurer@stmaryslongditton.org.uk</a>
PCC Hon Sec	Penny Fussell	020 8672 0838
PCC Hon Treasurer	Sarah Carvalho	<a href="mailto:treasurer@stmaryslongditton.org.uk">treasurer@stmaryslongditton.org.uk</a>
Parish Office & Community Hall	Mandy Ali The Parish Office Church Road	020 8339 0008 <a href="mailto:office@stmaryslongditton.org.uk">office@stmaryslongditton.org.uk</a>

**[www.stmaryslong ditton.org.uk](http://www.stmaryslongditton.org.uk)**

## FROM THE REGISTERS

**Baptism of:** Benjamin Woodhouse and Sophie Woodhouse

**Thanksgiving for the gift of a child:** Mia Hurley

**Wedding of:** Susanna Durgan and Oliver Jarman

**Renewal of wedding vows:** Amanda and Geoff Ali

**Funeral of:** Vivienne Hayward Johanna Maslen

**Memorial Service of:** Geoff Norris Alan White  
Phyllis Childs

**Burial of ashes of:** David Howe Ray Fullbrook  
Joan Fullbrook



\*\*\*\*\*

### DATES FOR YOUR DIARY

Tues 5th Dec 7pm - Plough & Harrow opening night  
Wed 13 Dec 8pm Book Box - Vesna Goldsworthy  
Fri 16 Dec 2pm Film Friday  
Fri 5th Jan 1pm Friendship lunch £8 per person  
Sat 20 Jan 7pm Burns Night Supper in the Community Hall  
Sat 3rd Feb 6.30pm for 7pm Quiz in Long Ditton Village Hall  
£10 per person - see page 5 for details  
Fri 2nd Feb - 1pm Friendship lunch  
Fri 16 Feb 2pm Film Friday  
Wed 21st Feb 8pm Book Box - Dr Phil Errington

## REGULAR SERVICES AT ST MARY'S

### **Sundays:**

08.00am Book of Common Prayer Holy Communion  
10.15am Parish Communion with Organ and hymns  
6pm Evening Prayer (Choral Evensong 3rd Sunday of month)

### **Wednesdays:**

10.00 am Holy Communion followed by Coffee Club

\*\*\*\*\*

### **Prayer Chain**

If you, or someone you know, would like to be prayed for (for any reason) please send your request by e-mail to:-

[prayerchain@stmaryslongditton.org.uk](mailto:prayerchain@stmaryslongditton.org.uk)

Your request will only be known to those in the Prayer Chain and your confidentiality will be respected.

\*\*\*\*\*

### **NOTES FOR SERVICES**

Sun 3 Dec	6pm	Advent Carol service
Thurs 21 Dec	7pm	Nine Lessons and Carols followed by Mulled wine and mince pies
<sup>x</sup> Sun 24 Dec	3pm	Christmas Eve—Crib Service
	11.30pm	Midnight Mass
Mon 25 Dec	8am	Holy Communion
	10.15am	Parish Communion

**Please Note - no morning service on Sun 24 December**

\*\*\*\*\*

Father,

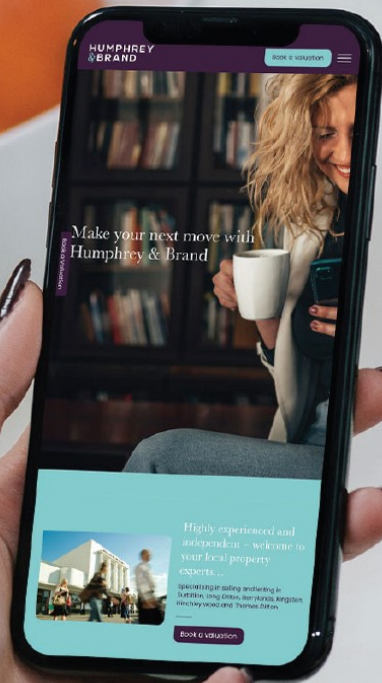
Thank you for creating us and for loving us so much that you sent Jesus to become one of us and to be our way to you. This Christmas may we know the love, peace, comfort and joy that only You can give, no matter what our circumstances. And may we reflect Your light and love in this dark world to bring glory to You. In Jesus' name. Amen.

***By Daphne Kitching***

We're 15 years  
old & we're  
celebrating with  
a brand-new  
website!

We're proud to be celebrating the launch of our brand-new website, designed with our wonderful customers in mind. Now you have the best property search or selling & letting experience in KT5, KT6, KT7 and KT10.

We look forward to working with you soon.



**HUMPHREY  
& BRAND**

Residential Sales & Lettings Agents

**020 8399 1888**

[humphreyandbrand.co.uk](http://humphreyandbrand.co.uk)

SCAN TO



SEE MORE!